

Vol. 165 Pg. 33

State of Tennessee
County of Davidson
BAY AREA HEALTHCARE GROUP, LTD., a Texas Limited Partnership, hereby certifies that it is the owner of Lot 7, Block 1 as shown on the foregoing plat; that it has had said lands surveyed and subdivided as shown; that streets shown are dedicated to the public use forever; that easements as shown are dedicated to the public use for the installation, operation and use of public utilities; and that this map was made for the purpose of description and dedication.

This the 1st day of February 2006
By: Howard K. Patterson
HOWARD K. PATTERSON, Vice-President

State of Tennessee
County of Davidson
This instrument was acknowledged before me by HOWARD K. PATTERSON, as Vice-President of BAY AREA HEALTHCARE GROUP, LTD.

This the 1st day of February 2006
Helen W. Cook
Notary Public in and for the State of Tennessee
My Commission Expires May 28, 2006

State of Texas
County of Harris
AMEGY BANK, a National Association, hereby certifies that it holds a lien on the property owned by PPIRODDFIELD LTD., as shown on the foregoing map and it approves of the subdivision and dedication for the purposes and considerations therein expressed.

This the 2nd day of FEBRUARY 2006
By: Megan Morris
MEGAN MORRIS, Vice-President

State of Texas
County of Harris
This instrument was acknowledged before me by MEGAN MORRIS, as Vice-President of AMEGY BANK, a National Association, on behalf of said association.

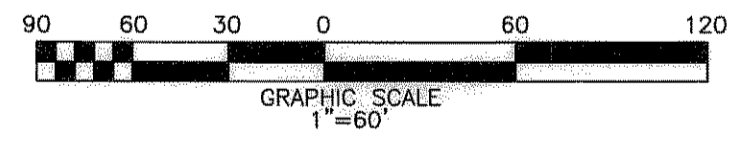
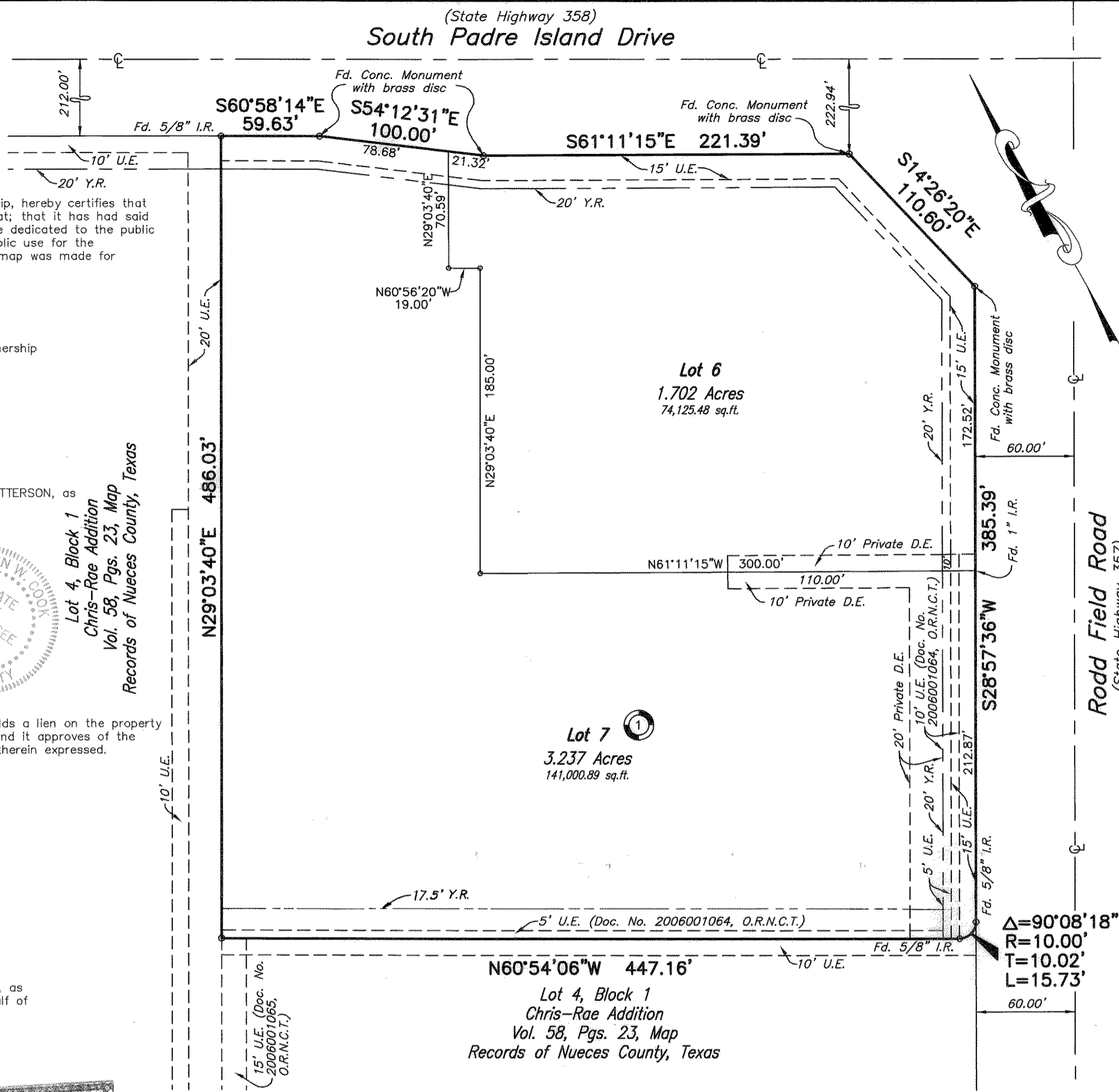
This the 2nd day of FEBRUARY 2006
Renee R. Gehm
Notary Public in and for the State of Texas

State of Texas
County of Harris
PPIRODDFIELD LTD., hereby certifies that it is the owner of Lot 6, Block 1 as shown on the foregoing plat; that it has had said lands surveyed and subdivided as shown; that streets shown are dedicated to the public use forever; that easements as shown are dedicated to the public use for the installation, operation and use of public utilities; and that this map was made for the purpose of description and dedication.

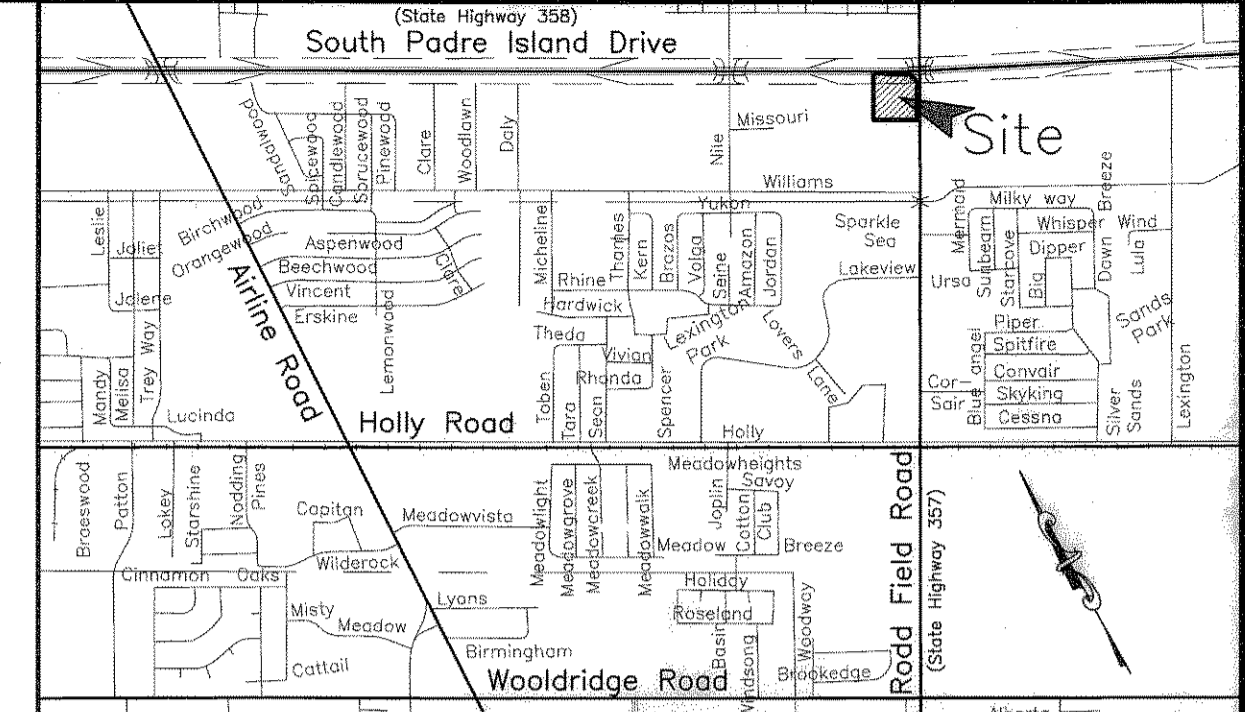
This the 2nd day of February 2006
By: Randy Peacock
RANDY PEACOCK, President

State of Texas
County of Harris
This instrument was acknowledged before me by RANDY PEACOCK, as President of PPIRODDFIELD LTD.

This the 2nd day of February 2006
Debra Fontenot
Notary Public in and for the State of Texas



- Notes:
- 1.) Total platted area contains 4.939 acres of land. (Includes Street Dedication)
 - 2.) Set 5/8 inch iron rods with red plastic cap stamped "URBAN ENGR C.C. TX" at all lot corners, except where noted.
 - 3.) The receiving water for storm water runoff is the Oso Bay Basin. The TCEQ has classified the aquatic life use for the Oso Bay as "exceptional" and "oyster waters" and also categorized the receiving water as "contact recreation" use.
 - 4.) Bearings are based on the recorded plat of Chris-Rae Plaza, a map of which is recorded in Volume 30, Page 74, Map Records of Nueces County, Texas.
 - 5.) By graphic plotting only, this property is in Zone "C" on Flood Insurance Rate Map, Community Panel No. 485464 0304 C, City of Corpus Christi, Texas, which bears an effective date of July 18, 1985 and is not in a Special Flood Hazard Area.
 - 6.) If any lot is developed with residential uses, a park settlement fee will be required during the permitting phase of the residential development.
 - 7.) The private drainage easement is to serve Lots 6 and 7. The owners of Lots 6 and 7 are responsible for the maintenance of the private drainage system.

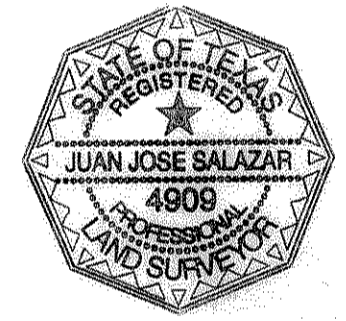


LOCATION MAP N.T.S.
**Plat of
Chris-Rae Addition
Block 1, Lots 6 and 7**

4.939 acres of land out of the remaining portion Chris-Rae Plaza, a map of which is recorded in Volume 30, Page 74, Map Records of Nueces County, Texas and out of an adjoining portion of State Highway No. 357 (Rodd Field Road) right-of-way conveyed by Clerk's File No. 699407, out of Lot 9, Section 18, Flour Bluff and Encinal Farm and Garden Tracts, a map of which is recorded in Volume A, Pages 41-43, Map Records of Nueces County, Texas.

State of Texas
County of Nueces
I, Juan J. Salazar, a Registered Professional Land Surveyor for Urban Engineering, have prepared the foregoing map from a survey made on the ground under my direction and is true and correct to the best of my knowledge, information and belief; I have been engaged under contract to set all Lot and Block corners as shown hereon and to complete such operations with due and reasonable diligence consistent with sound professional practice.

This the 3rd day of February 2006
Juan J. Salazar
Juan J. Salazar, R.L.S.
Texas License No. 4909



State of Texas
County of Nueces
This final plat of the herein described property was approved by the Department of Engineering Services of the City of Corpus Christi, Texas.

This the 17th day of Feb 2006
Angel R. Escobar, PE
Angel R. Escobar, P.E./R.P.L.S.
Director of Engineering Services

State of Texas
County of Nueces
This final plat of the herein described property was approved on behalf of the City of Corpus Christi, Texas by the Planning Commission.

This the 5th day of OCTOBER 2005
Michael N. Gunning Secretary
R. Bryan Stone Chairman
Michael N. Gunning, A.I.C.P.
R. Bryan Stone, Chairman
1005152- NP85

State of Texas
County of Nueces
I, Diana T. Barrera, Clerk of the County Court in and for said County, do hereby certify that the foregoing instrument dated the 20 day of February, 2006, with its certificate of authentication was filed for record in my office the 20 day of February, 2006 At 3:56 O'clock P. M., and duly recorded the 20 day of February, 2006, at 3:56 O'clock P. M., in said County in Volume 165, Page 33, Map Records.

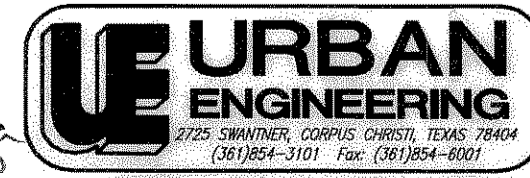
Witness my hand and seal of the County Court, in and for said County, at office in Corpus Christi, Texas, the day and year last written.

No. 200600081629
Filed for Record
at 3:56 O'clock P. M.
February 20, 2006

Diana T. Barrera
Diana T. Barrera, County Clerk
Nueces County, Texas
By: Janet B. Amigo Deputy

Diana T. Barrera
Clerk County Court
Nueces County, Texas

Randy B. Amigo
Deputy



DATE: Sept. 16, 2005
SCALE: 1" = 60'
JOB NO.: 28400.A5.01
SHEET: 1 of 1
DRAWN BY: XG

Vol. 165 Pg. 33